

## Cooperative Connections



**Veterans  
Sought:  
America's  
Co-ops' Hiring  
Program**

Page 8

## Election 2018

# Why W is Wrong for S.D.



**Ed Anderson, General Manager**

South Dakota Rural Electric Association  
ed.anderson@sdrea.coop

### **W is Wrong Partners** (as of Oct. 1, 2018)

Aberdeen Area Chamber of Commerce  
Aberdeen Development Corporation  
AGC South Dakota: Highway Heavy Utilities Chapter  
AGC Building Chapter South Dakota  
Americans for Prosperity South Dakota  
Associated School Boards of South Dakota  
Brandon Valley Area Chamber of Commerce  
Credit Union Association of the Dakotas  
Dakota Valley Business Council  
Huron Chamber of Commerce  
Independent Community Bankers of South Dakota  
Pierre Economic Development Corporation  
Rapid City Area Chamber of Commerce  
Rapid City Economic Development  
Republican Party Convention Resolution  
Sioux Falls Area Chamber of Commerce  
South Dakota Agri-Business Association  
South Dakota Association of Cooperatives  
South Dakota Association of County Commissioners  
South Dakota Association of Healthcare Organizations  
South Dakota Association of Towns and Townships  
South Dakota Bankers Association  
South Dakota Cattlemen's Association  
South Dakota Chamber of Commerce & Industry  
South Dakota Coalition for Responsible Taxation  
South Dakota Corn Growers Association  
South Dakota Electric Utility Companies  
South Dakota Farm Bureau  
South Dakota Grain and Feed Association  
South Dakota Hotel and Lodging Association  
South Dakota Municipal League  
South Dakota Petroleum and Propane Marketers Association  
South Dakota Retailers Association  
South Dakota Republican Party  
South Dakota Rural Electric Association  
South Dakota Telecommunications Association  
South Dakota Trucking Association  
Source: <http://www.wiswrong.com/partners.html>

This November, South Dakota voters will have a say on a number of candidates and issues on the general election ballot.

One of those will be a proposed amendment to the South Dakota constitution, Amendment W.

On the surface, it might sound like a good idea. But when you take the time to read through the multitude of pages brought to the Rushmore State by out-of-state money in New Jersey and Massachusetts, red flags start popping up all over the place.

While the folks from Massachusetts who brought W to our state want you to believe they've done so in the interest of bringing government back to the people, Amendment W does exactly the opposite by essentially creating a fourth branch of South Dakota government. W accomplishes this by establishing a non-elected tribunal that would have authority completely and intentionally separate from authority granted to the governor and the legislature. However, when that authority is found to be in conflict with existing law or the constitution, the authority granted to the tribunal would be held superior to conflicting statutory or constitutional provisions. That superiority would follow this new tribunal right on down the line through county and city government to members of special local districts such as road, irrigation, fire and ambulance districts and township boards. It would further give the board power over public employees working for state, county and local governments.

The creation of this non-elected tribunal, "The State Government Accountability Board" represents an unprecedented concentration of power, giving the board almost unlimited unchecked authority. And in very specific language repeated multiple times within the pages of W, it states that in areas where the authority of the board would be in conflict with existing laws or other sections of our constitution, the authority contained within the new articles would prevail, placing this new tribunal above the law.

As of Oct. 1, 37 South Dakota-based organizations – groups comprised of actual South Dakotans – signed on in opposition to Amendment W. South Dakota's electric cooperatives through their statewide association, the South Dakota Rural Electric Association, are among those groups.

Decisions such as these are not taken lightly. Our board is comprised of individual South Dakotans who were elected by their neighbors to serve on their local electric cooperative boards. Electric cooperatives understand democratic control. It is the bedrock of the cooperative business model. Nothing about W reconciles with a representative form of government. I've never seen a better example of a solution looking for a problem.

To learn more about the "No on W" campaign, go to <http://www.wiswrong.com/>. To see the amendment in its entirety, along with other measures voters will be deciding on in November, go to <https://sdsos.gov/elections-voting/upcoming-elections/general-information/2018-ballot-questions.aspx>

Join me in voting "No" on W.





# South Dakota Electric Cooperative Connections

ISSN No. 1067-4977

## Produced by the following electric cooperatives in South Dakota and western Minnesota:

Black Hills Electric, Custer, S.D.  
Bon Homme-Yankton Electric, Tabor, S.D.  
Butte Electric, Newell, S.D.  
Cam Wal Electric, Selby, S.D.  
Central Electric, Mitchell, S.D.  
Charles Mix Electric, Lake Andes, S.D.  
Cherry-Todd Electric, Mission, S.D.  
Clay-Union Electric, Vermillion, S.D.  
Codington-Clark Electric,  
Watertown, S.D.  
Dakota Energy, Huron, S.D.  
Douglas Electric, Armour, S.D.  
East River Electric, Madison, S.D.  
FEM Electric, Ipswich, S.D.  
Grand Electric, Bison, S.D.  
H-D Electric, Clear Lake, S.D.  
Kingsbury Electric, De Smet, S.D.  
Lacreek Electric, Martin, S.D.  
Lake Region Electric, Webster, S.D.  
Lyon-Lincoln Electric, Tyler, Minn.  
Moreau-Grand Electric, Timber Lake, S.D.  
Northern Electric, Bath, S.D.  
Oahe Electric, Blunt, S.D.  
Renville-Sibley Co-op Power,  
Danube, Minn.  
Rosebud Electric, Gregory, S.D.  
Rushmore Electric, Rapid City, S.D.  
Sioux Valley Energy, Colman, S.D.  
Southeastern Electric, Marion, S.D.  
Traverse Electric, Wheaton, Minn.  
Union County Electric, Elk Point, S.D.  
West Central Electric, Murdo, S.D.  
West River Electric, Wall, S.D.  
Whetstone Valley Electric, Milbank, S.D.  
City of Elk Point, S.D.

SOUTH DAKOTA ELECTRIC COOPERATIVE CONNECTIONS is published monthly for \$6 annually for member cooperatives, \$12 annually for non-members by South Dakota Rural Electric Association, 222 W. Pleasant Drive, Pierre, S.D. 57501. Correspondence to: Editor, South Dakota Electric Cooperative Connections, PO Box 1138, Pierre, SD 57501; telephone (605) 224-8823; fax (605) 224-4430; e-mail editor@sdrea.coop

**Brenda Kleinjan**, Editor  
**Dawn Trapp**, Communications Specialist  
**Jocelyn Romey**,  
Staff Communications Professional



Linemen play a critical role in our mission to provide reliable, affordable electricity. Tough training and a focus on safety is behind everything they do. Simulated field operations and emergency-response training are ways Basin Electric invests in their safety and in providing reliable power to you.



**BASIN ELECTRIC  
POWER COOPERATIVE**

A Touchstone Energy® Cooperative



Your energy starts here.

[basinelectric.com](http://basinelectric.com)

# Halloween Safety Tips

Are your Halloween traditions a trick or a treat? The following helpful tips will let you know if real danger is lurking in your Halloween décor.

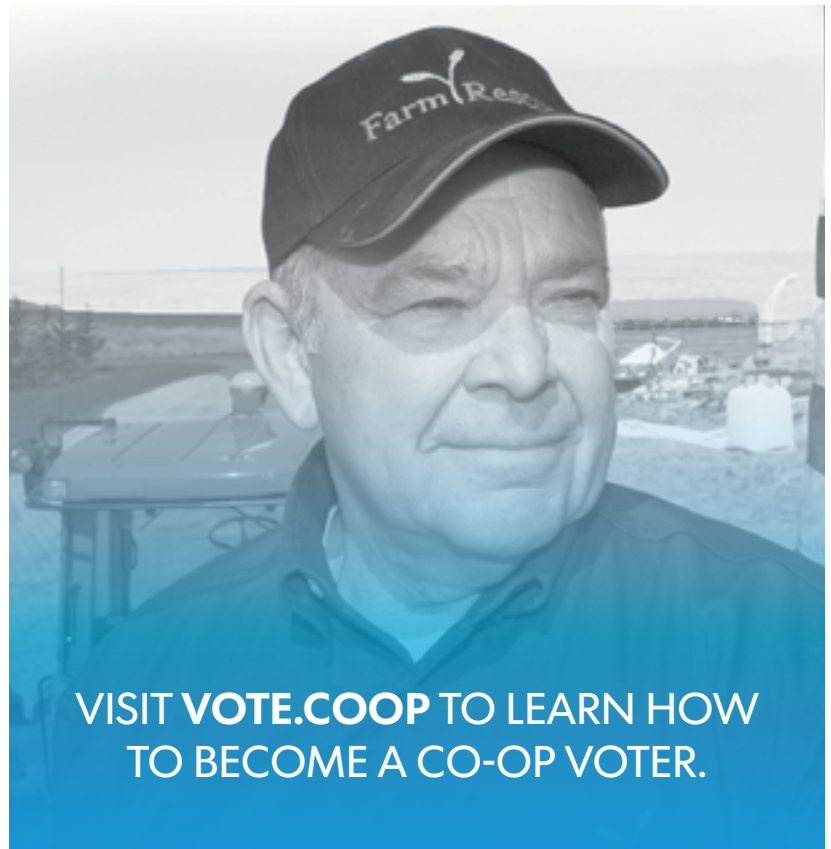
### Trick:

- Costumes can catch fire! Avoid costumes with billowing or long trailing fabric. If you are making your own costumes, choose fire-resistant materials.
- Never use electrical products outdoors that are marked "for indoor use." You could get shocked – or worse!
- Avoid using dried flowers, corn stalks, hay or crepe paper in your festive decorations. These items are highly flammable and could even be ignited by heat from a nearby light bulb or heater.
- Never block exits or escape routes.

### Treat:

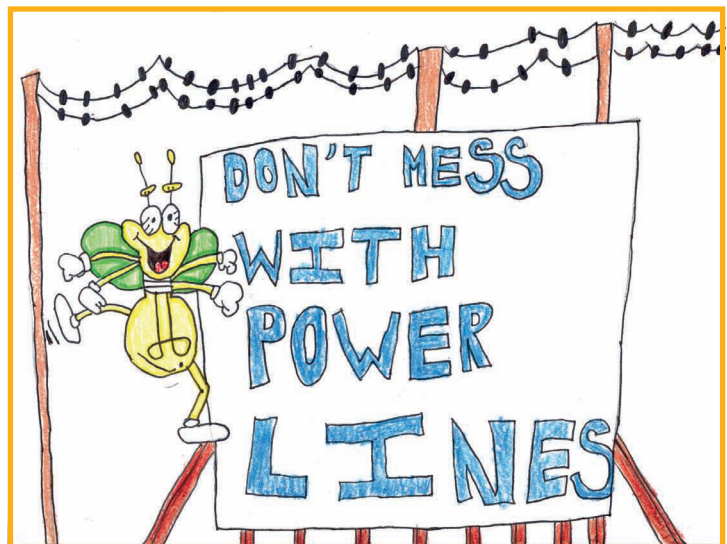
- Inspect all electrical decorations and extension cords before use. Discard any that have cracked, frayed or exposed wiring.
- Outdoor electrical decorations are increasingly popular. To reduce your risk of shocks, ground fault circuit interrupters (GFCIs) should be used wherever water may come into contact with electrical products. Replace traditional receptacles with GFCIs or use a portable one.
- Use only electrical lights and decorations that are approved for safe use by a nationally tested laboratory such as UL, Intertek (ETL) or CSA.
- Always turn off electrical decorations and extinguish any open flames before leaving home or going to bed.
- Use a flashlight or battery-operated candles in a jack-o-lantern. If you must use a real candle, use extreme caution as it can start a fire or burn someone.
- Curiosity leads to many things, not all of them safe. Protect children by installing tamper resistant receptacles in your home. This permanent, cost-effective solution prevents injuries and deaths caused by the insertion of foreign objects into outlets.

Source: esfi.org



VISIT **VOTE.COOP** TO LEARN HOW  
TO BECOME A CO-OP VOTER.

## KIDS CORNER SAFETY POSTER



### "Don't mess with power lines."

**Jackson Baumgarn**, 8 years old

Jackson is the son of Casey and Anne Baumgarn, Webster, S.D.  
They are members of Lake Region Electric Association, Webster.

Kids, send your drawing with an electrical safety tip to your local electric cooperative (address found on Page 3). If your poster is published, you'll receive a prize. All entries must include your name, age, mailing address and the names of your parents. Colored drawings are encouraged.





# Crock Pot Creations

## 3-Bean Crockpot Casserole

1/2 lb. bacon	1/2 cup brown sugar
1/2 lb. hamburger	1/2 cup ketchup
1 cup chopped onions	1 can pork and beans
1/2 tsp. salt	1 can lima beans
2 T. vinegar	1 can kidney beans
1 T. prepared mustard	

Brown bacon until crispy. Brown hamburger with the onions. Combine all ingredients in a crock pot. Cook on LOW for 3 to 4 hours.

Mary Ellen Luikens, Tea, SD

## Triple Chocolate Surprise

1 (18 oz.) chocolate cake mix	3/4 cup oil
8 oz. sour cream	4 eggs
1 pkg. instant chocolate pudding	1 cup water
	1 cup chocolate chips

Combine all ingredients. Spray crock pot with no stick cooking spray. Pour mixture into pot. Cook on LOW 6 to 8 hours.

Betty Klingbile, Wall, SD

## Juanita's Crockpot Peanut Clusters

1 (16 oz.) jar salted peanuts	4 oz. German chocolate bar, broken into pieces
1 (16 oz.) jar unsalted peanuts	3 lbs. almond bark, broken into pieces
1 (12 oz.) bag semi-sweet chocolate chips	

Layer ingredients in crock pot in order given. Cook on LOW for 3 hours. DO NOT OPEN. After 3 hours, stir and cook an additional 5 minutes. Turn off crock pot and let cool at least 15 minutes. Stir and spoon heaping spoonfuls onto waxed or parchment paper. Let sit until set.

Marcia Broone, Rapid City, SD

## Slow Cooker Chicken Rice Curry

4 bone-in chicken breasts, halves (about 2 lbs.), skin removed	1 medium Golden Delicious apple, unpeeled, cored and coarsely chopped
1 T. McCormick® Curry Powder	1/4 cup raisins
1 pkg. McCormick® Chicken Gravy Mix	1/4 cup McCormick® Onions, Chopped
1 (14.5 oz.) can chicken broth	2 McCormick® Bay Leaves, broken in half
1 medium red bell pepper, cut into 1/2-inch pieces	1/2 tsp. McCormick® Garlic Powder
	1 cup instant rice

Rinse chicken and pat dry. Cut each breast half into 2 pieces. Sprinkle chicken with curry powder. Gradually stir gravy mix into broth in slow cooker until well blended. Add seasoned chicken and remaining ingredients except rice; stir well. Cover. Cook 8 hours on LOW or 4 hours on HIGH. Gently stir in rice. Cover. Cook 15 to 20 minutes longer on HIGH or until rice is tender. Remove bay leaves before serving. Makes 6 servings

*Nutritional Information Per Serving: Calories 296, Total Fat 4g, Cholesterol 78mg, Sodium 600mg, Protein 35g, Carbohydrates 30g, Dietary Fiber 2g*

**Pictured, Cooperative Connections**

## Crockpot French Dip Sandwiches

3 lb. roast, beef or pork	1 (10 oz.) can beef broth
1 (10 oz.) can French onion soup	1 (12 oz.) can beer
	Swiss cheese

Cook above ingredients in crock pot on LOW for 7 hours. Shred meat with fork. Let set 30 minutes. Fill buns (I use steak buns). Top with Swiss cheese. Use the juice in crock pot for dipping, if desired.

Jane Ham, Rapid City, SD

Please send your favorite holiday, soup or brunch recipes to your local electric cooperative (address found on Page 3). Each recipe printed will be entered into a drawing for a prize in December 2018. All entries must include your name, mailing address, telephone number and cooperative name.

# Efficient Holiday Lighting



**Pat Keegan**

Collaborative Efficiency

**Innovative  
decorating  
ideas can make  
your display  
more dynamic  
and interesting,  
which might  
help you  
get by with  
fewer lights.**

This column was co-written by Pat Keegan and Brad Thiessen of Collaborative Efficiency. For more information, please visit: [www.collaborativeefficiency.com/energytips](http://www.collaborativeefficiency.com/energytips).

**Dear Pat:** My husband and I love decorating our home with holiday lights every year, but I feel guilty about the higher energy bill we get in January. How can we light up the holidays without wasting electricity? – Jessica

**Dear Jessica:** It's a shame that holiday lighting can lead to higher energy bills, but the good news is, there are strategies that can save you money without dampening your holiday spirit!

One of the best ways to save energy is LED lights, which use about 80 percent less energy than incandescent bulbs. The amount of money you can save depends on a lot of factors, including your electric rate and how many hours your holiday lights are turned on.

We've seen a number of savings estimates in energy costs. One report said that replacing five strings of traditional incandescent outdoor lights with LED bulbs could lower your bill from about \$14 to 22 cents. Another report said that replacing incandescent lights on a typical indoor tree with LED bulbs could lower your monthly cost from \$15 to \$2.

The reason incandescent bulbs are so inefficient is that at least 90 percent of their energy is converted into heat, not light. LEDs, by contrast, convert virtually all their energy to light. This means up to 20 strings of LED lights can be linked together, whereas incandescent sets are typically limited to between three and five strings in a chain. The efficiency of LED lights also makes them safer because they generate so much less heat.

Aside from their energy efficiency, LED lights can last longer – around 200,000 hours or more, which is about 25 times longer than incandescent lights. The bulb is more durable because it is made of an epoxy instead of glass.

But not all LEDs are created equal. An LED that is not designed properly can flicker, change color or draw power even when it's turned off. To avoid these problems, purchase ENERGY STAR®-rated LEDs. To qualify for the ENERGY STAR rating, LED products must use 75 percent less energy than incandescent lighting and pass a number of additional tests.

The drawback of switching over to LED lights is the upfront cost. Incandescent bulbs can be purchased for 19 to 50 cents each, while a replacement LED will likely cost \$1 or more. But one estimate we ran across showed the estimated cost of buying and operating standard C-9 lights for 10 seasons is \$122 for incandescent bulbs and \$18 for LEDs. Plus, the LED lighting is more likely to last the full 10 seasons, meaning less trips to the store!

There are other ways to cut energy expenses. You can use decorative solar light sets, which store energy during the day and release light during the night. Timers are also a good idea because they can reduce energy use, especially if you don't always remember to turn the lights off before bedtime.

Innovative decorating ideas can make your display more dynamic and interesting, which might help you get by with fewer lights. This could reduce energy costs and still keep your holidays bright:

- Color-changing LED lights can cycle through the colors in sequence and can even be set to change colors in response to music.
- A laser light projector sits on the ground or other flat surface and projects multi-colored patterns onto the wall of your house. Most include a timer function and may come with a remote control and additional features. They come in a range of prices from \$20 up to \$150 or more.
- You can recreate the excitement of a laser light show (using LED lights) by installing a smart lighting system that creates pre-set or programmable light shows through your smart phone or other smart devices.
- For maximum effect with the smallest amount of energy use, try distributing the lighting across a broader space. In the spaces between light, add reflective ornaments and decorations to increase the effect of the lights and add interest.

I hope these tips help raise your holiday spirits without giving you the budget blues in January!



# Basin Electric Employee Testifies at EPA hearing

Tyler Hamman, Basin Electric senior legislative representative, presented comments at the Environmental Protection Agency's public hearing on the proposed Affordable Clean Energy Rule (ACE) Oct. 1 in Chicago, Ill.



**Tyler Hamman**  
Basin Electric  
Power Cooperative  
Senior Legislative  
Representative

"Basin Electric supports the proposed ACE rule," Hamman said during the hearing. "It is consistent with the plain reading of the Clean Air Act that demonstrates that Congress envisioned a 'standard of performance' that applies to specific sources based on adequately demonstrated technology. In addition, the proposed rule recognizes the Clean Air Act's cooperative federalism and gives states the authority to develop a standard of performance consistent with EPA's guidance, yet recognizing the unique characteristics of electric generating units within a state."

Hamman was one of approximately 200 people that testified during the hearing. A representative of Basin Electric member Tri-State Generation and Transmission Association also testified.

While this was the only hearing that will be held concerning the proposed ACE rule, the deadline to submit written comments is Oct. 31.

Basin Electric will submit in-depth written comments in addition to Hamman's oral testimony.



Basin Electric's generation dispatch center is now located at the control room at Deer Creek Station.

## S.D. Power Plant Adds Dispatch Role

A move to base the gas-peaking generation dispatch center at the Deer Creek Station, located in Brookings County near Elkton, S.D., was a result of the recent realigning of business needs at Basin Electric.

With 24-hour coverage available, Distributed Generation Manager Kevin Tschosik said the move made sense and he had the staff available who were happy to cover the need.

Tschosik said within a week's time, Basin Electric Information Services and Telecommunications and Deer Creek employees worked to set up the dispatch center, which is now located within the Deer Creek control room.

Joe Fiedler, North Dakota/Wyoming/Montana operations superintendent, spent a week at Deer Creek training the operation technicians tasked with dispatching responsibilities. "The technicians worked hard to prepare for their new roles," Tschosik said. "It was a lot of training in a short period of time, including working with Basin Electric's real-time traders, who call the station for self-commitments, based on market prices."

On Sept. 3, operation technicians at Deer Creek took on responsibility of recognizing the daily generation awards and ensuring the engines are online without missing the window of opportunity for selling power.

Generation is now dispatched from Deer Creek for power generated at Culbertson Station, Deer Creek Station, Groton Generation Station, Lonesome Creek Station, Pioneer Generation Station, Spirit Mound Station, Wyoming Distributed Generation, PrairieWinds 1 and Crow Lake Wind. These facilities produce a combined 1,512 megawatts of electricity that can be readily dispatched.

During normal business hours, each facility's technician run the engines, observing real-time operating conditions. "The technicians can react to equipment problems and quickly make corrections or adjustments for better efficiency and availability to meet market requirements," Tschosik said.

The change requires that there is always one person in the control room monitoring dispatch needs. After normal business hours, equipment startup and shutdown is solely controlled from the Deer Creek Station.

"Communication is key," Tschosik said. "It is important to properly communicate at the beginning and end of each day as the controls get passed from one site to another. We can now track closure and online times closely and with optimum control, as well as better protect our assets as we continue to run the stations to meet environmental compliance."

Tschosik said he believes the move allows the distributed generation employees a chance to better understand what is happening within the fleet on a day-to-day basis, spreading the knowledge base within the department. "There will be some challenges going forward, but we have great employees who have taken ownership in this business change," he said.



Military veterans meet with electric co-op leaders at a Veterans in Energy event. Veterans in Energy is a professional development group that was formed through NRECA's Serve Our Co-ops; Serve Our Country initiative to help veterans transition into the energy workforce after they've been hired at electric cooperatives.

## An Electric Co-op Mission to **HIRE VETERANS**

**Paul Wesslund**

NRECA

Electric cooperatives are working to make even better use of a powerful source of energy – military veterans.

“Veterans, active military and their spouses are some of our greatest assets as employees,” says Michelle Rostom, director of workforce development for the National Rural Electric Cooperative Association (NRECA). “They are mission-driven. When we think about providing safe, reliable and affordable power, we know our veterans – whatever their job – are focused on making sure we are operating safely and that we are creating a reliable electric network for co-op members.”

Rostom spends a lot of her time getting more veterans hired by electric co-ops in her role as program manager for NRECA's initiative called “Serve Our Co-ops; Serve Our Country.”

The program launched in January 2016 “to honor and employ veterans,” said Rostom.

Since then, the program has been forming a coalition of co-ops and other groups to focus attention on the benefits of hiring veterans and to actually hire more veterans.

In announcing the program, Jim Matheson, CEO of NRECA,



An NRECA Commemorative Coin Recognizes veterans hired through the Serve Our Co-ops; Serve Our Country program. On the Cover: A statue of South Dakota Gov. Leslie Jensen, who was governor in 1937-1939, stands in front of the Soldiers and Sailors Memorial Building in Pierre. Jensen served in both WWI and WWII.



said, “Our military veterans deserve our unending gratitude for their service to our country, on Veterans Day and every day. Veterans possess many of the qualities sought by electric co-ops, including a deep commitment to service and an uncompromising work ethic. More than 200,000 service members transition out of the military to civilian life each year and we’d like to tap into that talent to help fill the thousands of co-op jobs opening up.”

Hiring veterans is certainly a decent thing to do, but Rostom lists why it makes business sense as well.

“They understand their role and they go out and execute it,” she says. “They bring leadership skills, they work in teams and look out for each other in that kind of ‘brotherhood.’ They work in all types of weather. They are disciplined. They show up on time. Those are professional competencies that not every job applicant brings with them, but you find them in the military.”

The initiative grew out of broader strategic planning by NRECA. That plan envisioned that 25,000 jobs at electric co-ops would need to be filled in the next few years.

“We are racing to make sure we have the right talent applying for our jobs,” says Rostom.

Part of that work has been developing and distributing information to bring attention and advice aimed at connecting veterans with co-op jobs. A series of three checklists published by the program helps guide electric co-ops in setting up a veteran hiring effort. The checklists show co-ops how to recognize veterans, contact groups in their communities for broad-based effectiveness and bring attention to the skills and abilities veterans offer.

Some of those skills and abilities might not be immediately obvious, says Rostom, like what they learn by having to change their job and their residence every few years.

“They are trained to learn,” she says. “They change jobs every couple of years, so they learn to adapt.”

Serve Our Co-ops; Serve Our Country also started a group called “Veterans in Energy,” a professional organization to go

beyond hiring, by helping veterans transition into the energy workforce.

Military spouses make up another often-overlooked resource, says Rostom.

“You’ll get resumés for a spouse and they will have big gaps in their experience,” she says. “They’ve put their career path

**Our military veterans deserve our unending gratitude for their service to our country, on Veterans Day and every day.**

on hold to follow their spouse around the world with the military, so don’t just discount that resumé.”

Rostom says, “They’ve had to move their family probably 10 times over the past 15 years, so they have to plan, they have to find housing, find schools, medical care – and they’re doing that without their spouse there, who is deployed somewhere. Often, they are volunteering, so they are community-focused, which is what we look for in the co-ops. In working with

groups of volunteers, they are managing people, they are probably managing a budget, they are securing vendors for events. There are a lot of skill sets that they bring.”

Rostom continues, “Many are working on a degree while they are moving around the world. They are a phenomenal group of untapped talent we should consider. When you see that resumé, it doesn’t say military spouse, but I think it should. It totally changes the game – it shows the potential employer why their career has been put on hold. They are smart, educated, they are project managers, they work with diverse groups of people. They’re an untapped group of talent that we don’t always think about.”

Through Serve Our Co-ops; Serve Our Country, electric co-ops are better positioned to increase their veteran workforce and support local veteran communities. To learn more about the program, visit [www.servevets.coop](http://www.servevets.coop).

Paul Wesslund writes on consumer and cooperative affairs for the National Rural Electric Cooperative Association, the national trade association representing more than 900 local electric cooperatives. From growing suburbs to remote farming communities, electric co-ops serve as engines of economic development for 42 million Americans across 56 percent of the nation’s landscape.



Photo by NRECA

**What is the true impact livestock development could have on our region?**

**How can farm families and communities take advantage of these new opportunities?**

**What is the most economically feasible and environmentally sound path forward?**

These and other important questions will be discussed at the first:

# **LIVESTOCK DEVELOPMENT SUMMIT**

Hosted by your local  
Touchstone Energy® Cooperatives

**NOVEMBER 15, 2018  
SDSU CAMPUS, BROOKINGS, S.D.**

South Dakota and southwestern Minnesota farm families as well as community leaders who are interested in learning more about emerging livestock development opportunities are encouraged to attend.



## **Featured Speaker**

Barry H. Dunn, PhD  
President, South Dakota State University

## **Featured Speaker**

Governor Dennis Daugaard



## **Panel Discussions**

Economic Impact  
Young Farmers and Agribusinesses  
Financing  
Siting, Zoning and Permitting



## **Networking**

Talk with industry experts and other livestock developers

**TO REGISTER: visit [www.yourcooppower.com/LivestockSummit](http://www.yourcooppower.com/LivestockSummit)**

**COST: FREE! Please RSVP before November 1**

Together we are

# **RE-ENERGIZING LIVESTOCK DEVELOPMENT**



Touchstone Energy®  
Cooperatives





# Director Training Recognized

During the National Rural Electric Cooperative Association Regions Five and Six meeting held in Minneapolis, Minn., in September, 15 South Dakota directors were recognized for achieving training certification levels in the past year.

Of more than 7,000 active directors in the rural electric program today, nearly 65 percent have earned their Credentialed Cooperative Director certificate (CCD). Many of these directors are now focused on earning NRECA's Board Leadership Certificate (BLC) in order to stay current on the issues affecting the future of their co-ops. The purpose of all NRECA director level education is to prepare directors to make informed business decisions in the boardroom.

NRECA's Director Certificate Programs are specifically designed to help electric cooperative directors, at every stage of their service, understand their roles and responsibilities, stay up-to-date on the key issues and trends in the industry and prepare them to meet the challenges facing electric cooperatives now and in the future.

NRECA offers director education courses throughout the year in conjunction with a variety of NRECA educational conferences and events across the country, in partnership with statewide associations and on site at individual cooperatives.

## Credentialed Cooperative Director (CCD)

- Dennis Quivey, Black Hills Electric Cooperative, Custer
- John Lillevold, Bon Homme-Yankton Electric Association, Tabor
- Brice Bultje, Charles Mix Electric Association, Lake Andes
- Denise Soukup, Charles Mix Electric Association, Lake Andes
- Dave Heller, Kingsbury Electric Cooperative, De Smet
- Paul Peacock, Union County Electric Cooperative, Elk Point
- Richard Bendt, West Central Electric Cooperative, Murdo
- Kevin Neuhauser, West Central Electric Cooperative, Murdo
- Susan Peters, West River Electric Association, Wall

## Board Leadership Certificate (BLC)

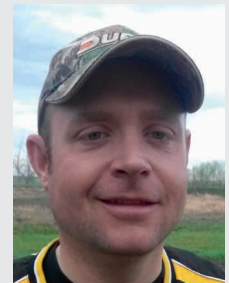
- Gary Kluthe, Black Hills Electric Cooperative, Custer
- James Preston, Black Hills Electric Cooperative, Custer
- Mark Reindl, Central Electric Cooperative, Mitchell
- Sharon Longwood, Grand Electric Cooperative, Bison
- Marty Hansen, West Central Electric Cooperative, Murdo
- William Tostenson, Whetstone Valley Electric Cooperative, Milbank



Dennis Quivey



John Lillevold



Brice Bultje



Denise Soukup



Dave Heller



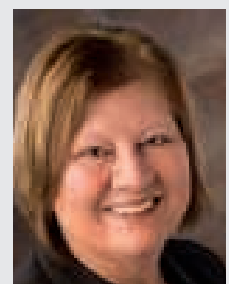
Paul Peacock



Richard Bendt



Kevin Neuhauser



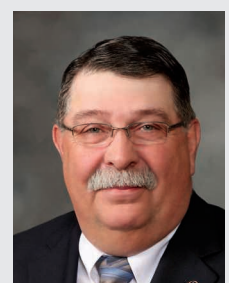
Susan Peters



Gary Kluthe



James Preston



Mark Reindl



Sharon Longwood



Marty Hansen



William Tostenson



Campaign buttons advocating a no vote on Amendment W are pictured.

# ELECTRIC CO-OPS JOIN FIGHT AGAINST W

**Brenda Kleinjan**

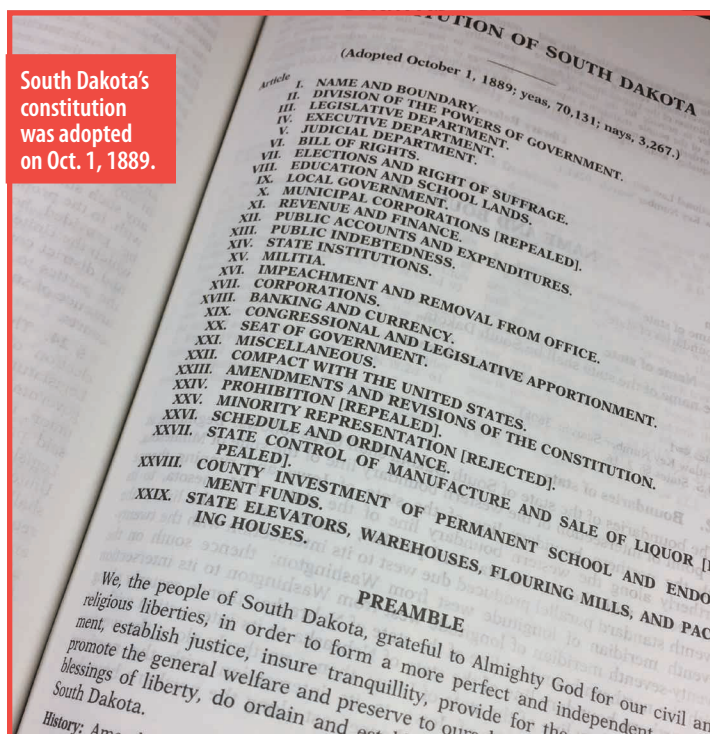
brenda.kleinjan@sdrea.coop

South Dakota's electric cooperatives, through their statewide association, the South Dakota Rural Electric Association in Pierre, have joined with more than 30 other South Dakota-based groups and individuals opposing an amendment to the South Dakota constitution.

Voters in November will decide the fate of Amendment W, which is titled "An initiated amendment to the South Dakota Constitution changing campaign finance and lobbying laws, creating a government accountability board, and changing certain initiative and referendum provisions." A "yes" vote would change South Dakota's constitution. A "no" vote leaves the constitution as is.

"Amendment W creates an entirely new article of the South Dakota Constitution and declares that the new article is superior to all other sections of the constitution. It creates a non-elected tribunal called "The State Government Accountability Board," forces the

South Dakota's  
constitution  
was adopted  
on Oct. 1, 1889.





legislature and Governor to fund it and allows that board to go to court for more money,” said David Owen, president of the South Dakota Chamber of Commerce and Industry.

Owen is the head of a coalition of South Dakota groups that have formed the “W is Wrong” statewide Ballot Question Committee opposing the amendment.

“No other state has anything like Amendment W,” Owen said. “Only two other states even mention an ethics board in their constitution and neither of them overrides the legislative process for funding and oversight.”

The SDREA board – comprised of local South Dakotans elected by their neighbors to serve on their local electric cooperative board and then elected to serve on the statewide board – has historically been engaged on advocating on behalf of their member-owners. SDREA was formed in 1942 to help cooperatives bring electricity to the state and continues to work to give voice to the 120,000 co-op members in the state. In Minnesota, the Minnesota Rural Electric Association does similar work on behalf of Minnesota electric cooperatives. The SDREA board consists of members of multiple political ideologies and parties.

“In reaching their conclusion to oppose Amendment W, the SDREA board walked through the proposed language thoughtfully and considered its potential ramifications carefully,” said Ed Anderson, general manager of the South Dakota Rural Electric Association. “With any proposed initiated measure or constitutional amendment this complex, a thoughtful, reasoned consideration of all possible effects is the only responsible approach to take and I applaud them for their effort.”

To see the amendment in its entirety, along with other measures voters will be deciding on in November, go to <https://sdsos.gov/elections-voting/upcoming-elections/general-information/2018-ballot-questions.aspx>

## Who Backs W?

Promoters of Amendment W claim to be a South Dakota group calling themselves “Represent South Dakota.” Financial reports from 2017 and from this year’s pre-primary report show that the effort has been funded from a Massachusetts organization known as “Represent US.”

For calendar year 2017, the Amendment W campaign reported to have raised \$369,588; and spent \$362,348 – leaving a balance of \$7,240

### 2017 notable contributions were:

- Represent US – Florence, MA – \$121,000
- End Citizens United Non-Federal – \$15,000 (in-kind)
- Donated by Represent US – \$47,238

Plus a supplemental report that is 191 pages of individual contributions – many multiple \$1, \$3, \$5 listings – totaling \$233,588 and not one from South Dakota. The last eight donations were responsible for 50 percent of the total. This report sets the stage of a deceptive claim that there are thousands of supporters of Amendment W who gave small contributions.

Right before the primary election the Amendment W campaign reported they had raised an additional \$26,681 and spent \$33,084 – with a new balance of \$837.40.

## Why is W Wrong?

- Amendment W creates an entirely new Article of the South Dakota Constitution and declares that the new article is superior to all others sections of the constitution and all other provisions of law.
- The Amendment bluntly states that **“if there are any conflicts with any other provisions of the constitution and the new article, this article shall control.”** Amendment W gives the new article control over the executive, legislative, and judicial branches of the constitution. To further secure this power the amendment uses the phrase **“notwithstanding any other provision of the constitution”** four times including a specific reference to Article II – which states **“The powers of the government of the state are divided into three distinct departments, the legislative, executive and judicial; and the powers and duties of each are prescribed by this Constitution.”**
- Amendment W creates an inquisition style board called “The State Government Accountability Board” and gives it unprecedented powers including taking anonymous complaints about campaign violations and a long list of other powers including (but not limited to): **(I) Investigate any allegation of bribery, theft, or embezzlement of public funds, or any violation of this Article, ethics rule, or state law related to government ethics, campaign finance, lobbying, government contracts, or corruption by any elected or appointed official, judge, or employee of any state or local government and to issue subpoenas related to the investigation;**
- This inquisitorial board will have authority over all “non-federal elected officials” starting with the Governor and ending with members of road districts and irrigation districts and political precinct chairmen and chairwomen. The reach of the new board includes every public employee working for state, county and local governments including townships.
- The members of the board are required to disclose the conflicts of interest and are expected to recuse themselves from participating in any investigation that deals with those conflicts unless **“the board member’s vote is necessary to resolve the matter”**...meaning that a member of the board with a conflict of interest will only vote when it matters most.
- The Amendment uses the constitution to appropriate and annual budget for the new board of \$389,000 (increasing with inflation) which is in direct conflict with the other provisions of the Constitution that require that appropriations be in the annual budget or a separate spending bill and passed with a 2/3rds majority of both the Senate and House of Representatives. The new board is also empowered to intervene in any civil lawsuit. **“The board may intervene as a matter of right in any civil action involving any government entity, agency, or instrumentality alleged to be in violation of any mandate or prohibition under this Article and to and in any civil action relating to the board’s powers or the sufficiency of resources provided for the board’s implementation and operation.”**

Source: <http://www.wiswrong.com/amendment-w.html>

# Lend Your Voice to Rural America

In 2016, rural America played a big part in our national elections – 500,000 MORE rural voters went to the polls than in 2012. This is an incredible story, as many in small towns and communities across our country went to the polls to ensure their voices were heard and elected officials took notice. But, elections matter EVERY year.

2018 will be no different and electric cooperatives have the opportunity to play a vital role in encouraging rural voter turnout and engaging on issues that matter most to us. This year, we must build on the momentum we started in 2016, to join with 42 million members of electric cooperatives around the country and remind our elected officials that rural issues matter.

Electric co-ops are not-for-profit energy providers that are owned by the members they serve. They provide coverage for 88 percent of our nation's counties. They are a foundation in their communities and their members can make a difference in lending their voices to issues like rural infrastructure and broadband and maintaining access to affordable, reliable electricity.

To ensure that all electric co-op members do continue the

drumbeat that started in 2016, the National Rural Electric Cooperative Association (NRECA) will continue the successful Co-ops Vote program. This is a non-partisan initiative that remains quite simple at its core: to ensure that members are registered to vote and they go to the polls for every election and to ensure rural issues remain part of the national discussion.

By participating in the Co-ops Vote program in 2018, co-op members continue to send a resounding message that all candidates – at all levels – will need to put rural America's concerns front and center in order to earn our vote. We proved in 2016 that with millions of electric co-op members speaking out with one voice, we can have a major impact in making our top issues part of the national conversation.

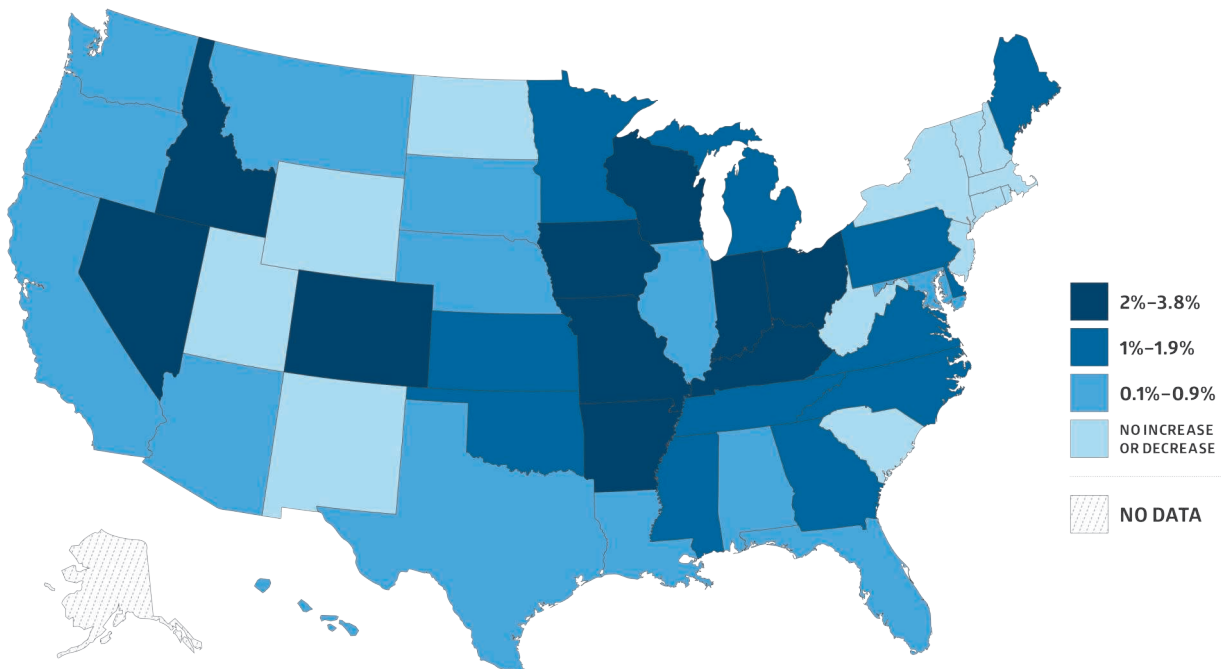
Everyone, regardless of their political beliefs, are encouraged to join America's electric cooperatives in this national effort. Let's continue to stand up for the priorities of the rural electric co-op community – it's more important now than ever. Learn more at [www.vote.coop](http://www.vote.coop).

## CO-OPS VOTE 2016 RURAL TURNOUT



### RURAL VOTE vs. URBAN VOTE

This data demonstrates where rural counties had a higher voter percentage turnout in 2016 than their urban and suburban counterparts.





# CO-OPS VOTE

A PROGRAM OF AMERICA'S ELECTRIC COOPERATIVES  
VOTE.COOP



America's Electric Cooperatives understand what's important to our homes and our communities, and we understand that registering to vote and voting in every

election is vital to protecting our way of life. So is building relationships with elected officials, so they understand the unique issues we face.

**Co-ops Vote** is designed to boost voter turnout, develop relationships with candidates and elected officials, and ensure that issues that matter in rural America are heard everywhere, from local councils all the way up to the U.S. Capitol.

**Co-ops Vote** provides the tools to help build those relationships and educate co-op employees, directors and consumer members prior to hitting the polls for every election.

Please join us, and make sure our elected leaders know that we expect them to represent all the people electric cooperatives serve. Learn more at [vote.coop](http://vote.coop).

Follow **CO-OPS VOTE** on social media and stay updated



@CoopsVote

## WHAT IS CO-OPS VOTE?

**Co-ops Vote** is a non-partisan campaign focused on enhancing the political strength of electric cooperatives through relationship building and voter engagement. The main goal of the campaign is to boost voter turnout in cooperative areas, making sure that our members exercise one of their most basic rights - the right to vote. Working in collaboration with states and local co-ops, this effort will educate and engage candidates and voters on important issues like:

- Expanding broadband coverage throughout rural America.
- Ensuring continued access to reliable electricity.
- Promoting the work of co-ops within the communities they serve.

## AMERICA'S ELECTRIC COOPERATIVES

- ✓ **833** distribution and **62** G&T cooperatives, a total of **905** co-op members.
- ✓ Serve a total of **42 million** people in **47 states**.
- ✓ Generate 5% of the total electricity in the United States.
- ✓ Own and maintain **2.6 million miles** or **42%** of the nation's electric distribution lines, covering **56%** of the U.S. landmass.
- ✓ Serve **19 million**, businesses, homes, schools, churches, farms, irrigation systems, and other establishments in **88% of US counties**.



## WHY IS THE CO-OPS VOTE PROGRAM IMPORTANT?

- We must elect public officials who identify with America's Electric Cooperatives and will vote to support the issues important to 42 million electric cooperative members across the nation.
- Electric cooperatives are a trusted resource in the communities we serve. Voters want to hear from community leaders (like electric co-ops) about important issues.

For more information on **Co-ops Vote** please visit [vote.coop](http://vote.coop) or [cooperative.com/coopsvote](http://cooperative.com/coopsvote).

## October 20

SD State High School Boys and Girls Cross Country Meet, Yankton Trail Park, Sioux Falls, SD

## October 20-21

South Dakota State and National Corn Husking Contest, State is on the 20th and National on the 21st, 9 a.m., Flandreau, SD

## October 26-27

Harvest Halloween, Yankton, SD, info@harvesthalloween.com

## October 26-27

Deadweird, Deadwood, SD, 605-578-1876

## October 26-28

ZooBoo, Sioux Falls, SD, 605-367-7003

## October 26-28

Autumn Festival, An Arts and Crafts Affair, Sioux Falls, SD, 402-331-2889

## October 27

Scare in the Square, Rapid City, SD, 605-716-7979

## October 27

ZOO BOO, Watertown, SD, 605-882-6269

## October 27-28

Dakota Territory Gun Show, Davison County 4-H Grounds, Mitchell, SD, 605-630-2199

## November 1-3

South Dakota Local Foods Conference, Brookings, SD, Contact 605-681-6793 or SDSPAinfo@gmail.com

## November 8-10

Ringneck Festival and Bird Dog Challenge, Huron, SD, 605-352-0000

**October 20-January 6:**  
Pheasant Hunting Season,  
Statewide, Pierre, SD,  
605-223-7660

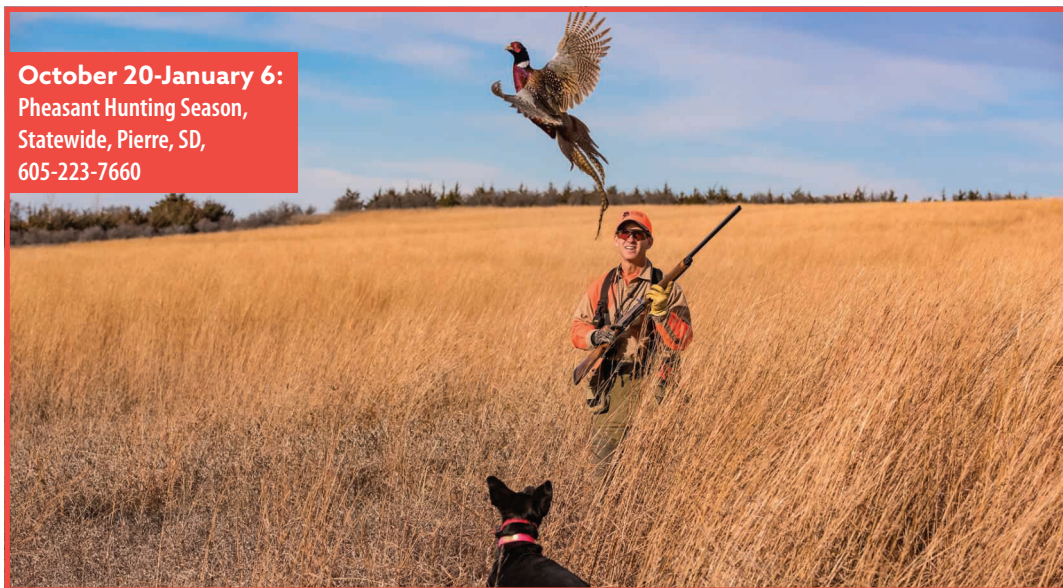


Photo courtesy: travelouthdaks.com

## November 9

Hairball, Deadwood Mountain Grand, Deadwood, SD, 605-559-1188

## November 10

Sisseton Area Merchants and Crafters 21st Annual Holiday Extravaganza, Sisseton, SD, 605-698-7425

## November 10

Mountain West Beer Fest, Rapid City, SD, 605-343-6161

## November 15-December 18

Black Hills Christmas Tree Permit Season, Custer, SD, 605-673-9200

## November 16-17

Holiday Arts Christmas Craft Show, Masonic Temple, Mitchell, SD, 605-359-2049

## November 17-18

Winterfest: A Winter Arts Festival, Aberdeen, SD, artscouncil@nvc.net

## November 20-December 26

Christmas at the Capitol, Pierre, SD, 605-773-3178

## November 23-24, Dec. 1-2, 8-9, 15-16, 22-23

1880 Train Holiday Express, Hill City, SD, 605-574-2222

## November 29-30

Festival of Trees, Lead, SD, 605-584-2067

## December 1

Christmas Stroll and Holidazzle Parade, Spearfish, SD, 605-717-9294

## December 1-2

Living Christmas Tree, Aberdeen, SD, 605-229-6349

## Dec. 1, 7-8, 13-15, 20-21

Strawbale Winery Twilight Flights, Renner, SD, 605-543-5071

## December 8

Community Christmas Musicale, Eureka, SD, 605-284-2161

## December 8

Frontier Christmas, Lake City, SD, 605-448-5474

## December 8-9

Black Hills Cowboy Christmas, Lead, SD, 605-584-2067

## December 9

REO Speedwagon, Deadwood, SD, 605-559-0386

## December 14

A Green Dolphin Jazzy Christmas Concert, Spearfish, SD, 605-642-7973

## December 15-March 31

South Dakota snowmobile trails season, Lead, SD, 605-584-3896

**To have your event listed on this page, send complete information, including date, event, place and contact to your local electric cooperative. Include your name, address and daytime telephone number. Information must be submitted at least eight weeks prior to your event. Please call ahead to confirm date, time and location of event.**